



Seeding from a Dell™ DR Series System to an External Device

Using the Dell DR Series System CLI

Dell Engineering
August 2014

Revisions

Date	Description
August 2014	Initial release

THIS WHITE PAPER IS FOR INFORMATIONAL PURPOSES ONLY, AND MAY CONTAIN TYPOGRAPHICAL ERRORS AND TECHNICAL INACCURACIES. THE CONTENT IS PROVIDED AS IS, WITHOUT EXPRESS OR IMPLIED WARRANTIES OF ANY KIND.

© 2014 Dell Inc. All rights reserved. Reproduction of this material in any manner whatsoever without the express written permission of Dell Inc. is strictly forbidden. For more information, contact Dell.

PRODUCT WARRANTIES APPLICABLE TO THE DELL PRODUCTS DESCRIBED IN THIS DOCUMENT MAY BE FOUND AT: <http://www.dell.com/learn/us/en/19/terms-of-sale-commercial-and-public-sector> Performance of network reference architectures discussed in this document may vary with differing deployment conditions, network loads, and the like. Third party products may be included in reference architectures for the convenience of the reader. Inclusion of such third party products does not necessarily constitute Dell's recommendation of those products. Please consult your Dell representative for additional information.

Trademarks used in this text:

Dell™, the Dell logo, Dell Boomi™, Dell Precision™, OptiPlex™, Latitude™, PowerEdge™, PowerVault™, PowerConnect™, OpenManage™, EqualLogic™, Compellent™, KACE™, FlexAddress™, Force10™ and Vostro™ are trademarks of Dell Inc. Other Dell trademarks may be used in this document. Cisco Nexus®, Cisco MDS®, Cisco NX-OS®, and other Cisco Catalyst® are registered trademarks of Cisco System Inc. EMC VNX®, and EMC Unisphere® are registered trademarks of EMC Corporation. Intel®, Pentium®, Xeon®, Core® and Celeron® are registered trademarks of Intel Corporation in the U.S. and other countries. AMD® is a registered trademark and AMD Opteron™, AMD Phenom™ and AMD Sempron™ are trademarks of Advanced Micro Devices, Inc. Microsoft®, Windows®, Windows Server®, Internet Explorer®, MS-DOS®, Windows Vista® and Active Directory® are either trademarks or registered trademarks of Microsoft Corporation in the United States and/or other countries. Red Hat® and Red Hat® Enterprise Linux® are registered trademarks of Red Hat, Inc. in the United States and/or other countries. Novell® and SUSE® are registered trademarks of Novell Inc. in the United States and other countries. Oracle® is a registered trademark of Oracle Corporation and/or its affiliates. Citrix®, Xen®, XenServer® and XenMotion® are either registered trademarks or trademarks of Citrix Systems, Inc. in the United States and/or other countries. VMware®, Virtual SMP®, vMotion®, vCenter® and vSphere® are registered trademarks or trademarks of VMware, Inc. in the United States or other countries. IBM® is a registered trademark of International Business Machines Corporation. Broadcom® and NetXtreme® are registered trademarks of Broadcom Corporation. Qlogic is a registered trademark of QLogic Corporation. Other trademarks and trade names may be used in this document to refer to either the entities claiming the marks and/or names or their products and are the property of their respective owners. Dell disclaims proprietary interest in the marks and names of others.



Table of contents

1	Understanding the seeding process	5
2	Seeding data from a DR Series system and copying it to a replication target.....	6
2.1	Preparing for seeding	6
2.2	Setting up a seeding export job on the source DR Series system	6
2.3	Important notes about the seeding export process.....	9
2.4	Export CLI flow.....	10
3	Setting up a seeding import job on the target DR Series system.....	11
3.2	Important notes about the import seeding process	13
3.4	Import CLI flow	14
4	Synchronizing the source and target containers	15
4.1	If a target container exists	15
4.2	If the target container does not exist.....	15



Executive summary

This paper provides information about how to set up seeding from a Dell DR Series system to an external device through the Dell DR Series command line interface (CLI). This paper is a quick reference guide and does not include all DR Series system deployment best practices.

For additional information, see the DR Series system documentation and other data management application best practices whitepapers for your specific DR Series system at:

<http://www.dell.com/powervaultmanuals>

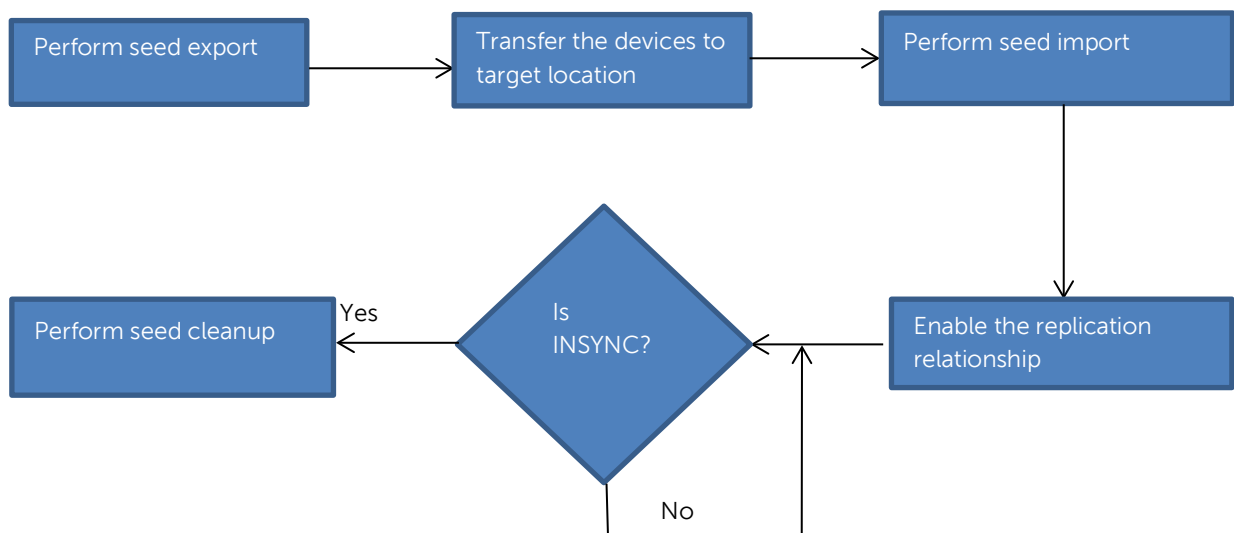


1 Understanding the seeding process

Seeding is a process that copies de-duplicated data from a DR Series system to an external device (typically USB), which is exported as a CIFS share. The seeding process comprises the following steps:

1. The device attached to a client machine is mounted using the CIFS protocol on the DR Series system; and, seeding is initiated, which copies the data (export) to the device.
2. Once the data is copied entirely, the devices are later shipped to the location of the target DR Series system.
3. The device is attached to another client at the remote site and mounted using the CIFS protocol on the target DR Series system.
4. The data is imported to the target DR Series system.
5. Once all of the data is imported, replication re-sync is initiated between the source and target DR containers. Since the data is already present on the target, the re-sync completes quickly after transferring the namespace with any other changes in data. Replication setup is ready between the source and target.

The following diagram shows this process.



2 Seeding data from a DR Series system and copying it to a replication target

2.1 Preparing for seeding

Before the seeding process is started, you need to gather the following information.

- The names of the containers on the appliance that contain the data to be replicated (typically the containers for which the disaster recovery setup must be done). These container names are given as input to the seeding process.
- Name or IP address of the client machine on which the USB device is mounted.
- Name of the CIFS share (USB device) exported to the "outside world."
- Credentials (including domain, if any) to access the client.
- A password (minimum eight characters) to use for encrypting the data on the device. This password must be input at import time to decrypt the data.

2.2 Setting up a seeding export job on the source DR Series system

The following steps describe the commands for setting up a seeding export job on the source DR Series system.

1. Create a seed export job by entering the following command.

```
seed --create --op export [--enc_type <aes128 | aes256>]
```

By default the data is encrypted; however, the encryption type is optional. This command would request a password that is needed for encryption as shown in the following example. (Note that this same password is to be given as input to the import operation, which verifies and decrypts the data.)

```
[root@DR4000-DHYLBM1 ~]# seed --create --op export --enc_type aes128
Enter password for seed export:
Re-enter password for seed export:
Successfully created seed job details.
```

2. Once a seed job is created, the container whose data is to be seeded must be added to the job. If there are multiple containers, you can execute the following command multiple times to seed the data from all containers.

```
seed --add_container --name <container name>
```

```
[root@DR4000-DHYLBM1 ~]# seed --add_container --name seed_container
Successfully added seed container seed_container.
```



- To reference the device to which the seed data must be copied, enter the following command. (Note that only the shares exported by CIFS protocol are recognized.)

```
seed --add_device --server <server name> --volume <volume> --username <user name> [--domain <domain name>]
```

In this command, the parameters are as follows:

- server name** - the name of the client which exports the device as a CIFS share.
- volume name** - the name of the export share on the target server. The name is case-sensitive.
- user name** - credentials to access the share. Password is requested separately.

```
[root@DR4000-DHYLBM1 ~]# seed --add_device --server 10.250.242.213 --volume win_share --username administrator
Enter password for administrator@10.250.242.213:
Successfully added seed device.
```

- Once the add device is successful, you can cross check the configuration details by using the following command. This step is recommended before you proceed further.

```
seed -show
```

```
[root@DR4000-DHYLBM1 ~]# seed --show
Device info
=====
Server                :10.250.242.213
Volume                :win_share
Username              :administrator
Domain                :NA

Job info
=====
Operation              :Export
Status                 :Initialized
Container              :seed_container
Encryption type        :aes128
```

- Enter the following command to start the seeding process.

```
seed -start
```

The data copy begins and will continue until either the space on the device is full or all of the data of the containers added is seeded.

```
[root@DR4000-DHYLBM1 ~]# seed --start
Successfully started seed job.
```

- Enter the following command to monitor the seeding progress. If the "Seed status" has reached 'FINISHED', then the seeding of the containers given as input is complete.

```
seed -stats
```

If the status is shown as 'Paused (Device full),' then the share has no more space to copy the data. The device must be removed (using the commands, "seed -stop" and "seed -remove_device") and a new device with free space can be added (using the command, seed -add_device). This scenario occurs when more devices are available, and seeding has to be continued. Adding a new device without deleting the job would continue to copy the data from where it was left. You can execute the command, "seed -start" to continue.

The type of information in the output of the command, "seed -stats," looks similar to the following example.

```
[root@DR4000-DHYLBM1 ~]# seed --stats
Seeding Source Stats:

Seed state:                SEED_STARTED
Seed status:               PENDING
Seed device mount:        /mnt/.__seed_device
Blockmaps read:           1
Seeding Dictionary updates: 957
Streams read:             171615
Comp bytes read:          4735312343
Streams committed:       160674
Streams deduped:         100181
DS's committed:          368
Total bytes processed:    7808325672
Total bytes deduped:     2859079806
Total inline bytes:      0
Total orig bytes committed: 4634642077
Total comp bytes committed: 4634642077
Device orig bytes committed: 4634642077
Device comp bytes committed: 4634642077
Logical Avg Throughput:  134985.311 KB/s
Logical Max Throughput:  339862.265 KB/s
Physical Avg Throughput: 109999.312 KB/s
Physical Max Throughput: 151030.517 KB/s
Estimated time to sync:  0 days 0 hours 0 minutes 22 seconds

Seed data progress:
File Path:  Processed:  Pending:  Data to Device:

seed_container:/file: 7808301653 Bytes: 2677458347 Bytes: 4949245866 Bytes

Seed data history:
File Path:  Processed:  Data to Device:  Throughput:
```

7. If seeding must be stopped for some time, or the device must be removed, you can execute the following command to stop all I/O to the seeding device.

seed -stop

```
[root@DR4000-DHYLBM1 ~]# seed --stop
Successfully stopped seed job.
```

8. You can enter the following command to remove the device from the DR Series system to which the seed data has been written. It is recommended that you execute the command, seed -stop before removing the device.

seed -remove_device




```
[root@DR4000-DHYLBM1 ~]# seed --remove_device  
Successfully deleted device details.
```

9. If the data to be seeded is completely gathered and the seed job is complete, you can delete the job by entering the following command.

```
seed -delete
```

```
[root@DR4000-DHYLBM1 ~]# seed --delete  
Successfully deleted seed job details.
```

2.3 Important notes about the seeding export process

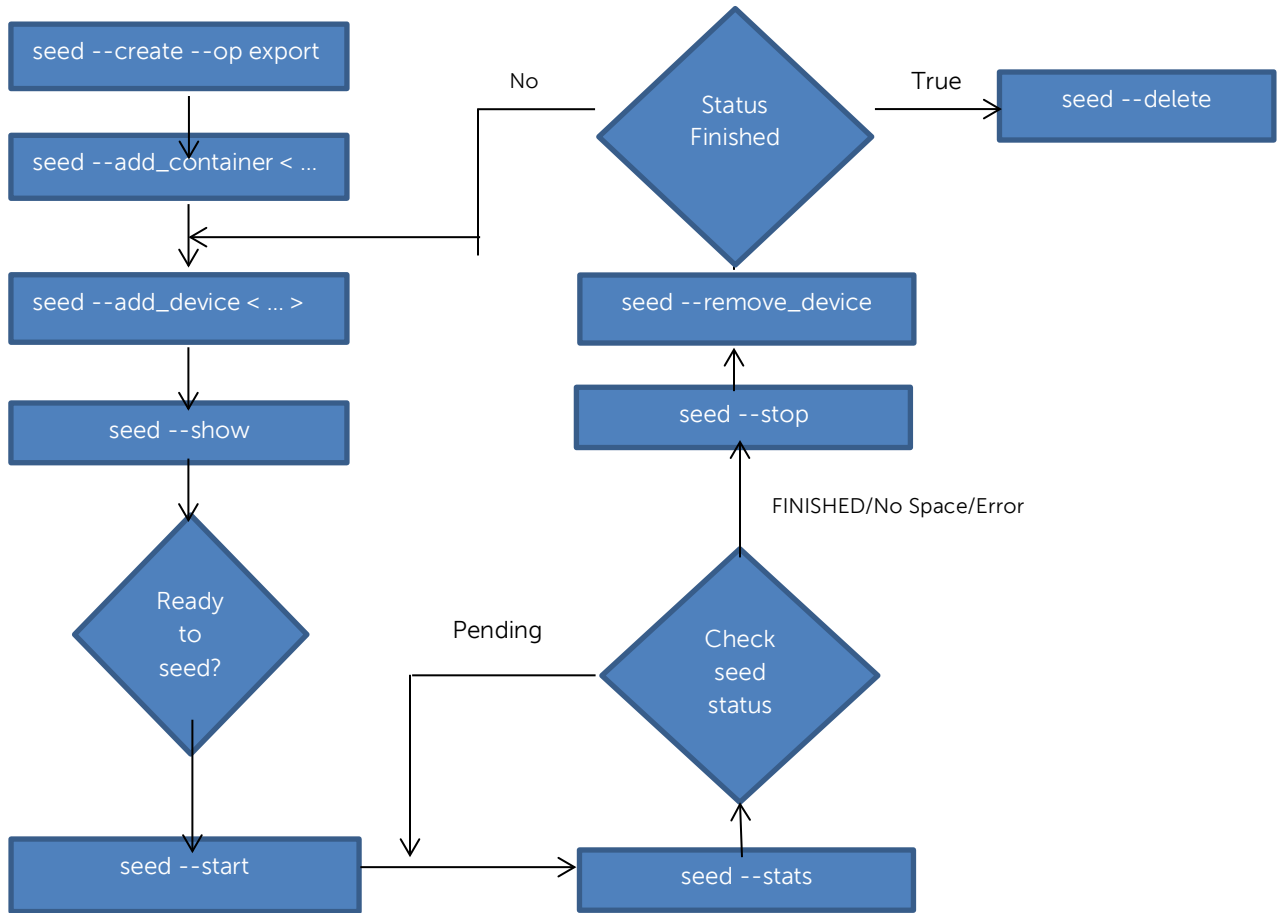
- If 'seed -delete' is executed, all of the information about the seeding job is removed from the DR Series system. If a new job is created for the same container, then it will copy all the data once again.
- The seeding process does not require that data ingest be stopped; even to the container to which the data is seeded. This means the DR Series system can continue to function normally while seeding is in process.
- If the external device runs out of space, you should enter the commands 'seed -stop,' 'seed -remove_device,' and then 'seed -add_device' to add the new device. Enter 'seed -start' to continue seeding to the new device or the same device after the data on the device is imported on the target.
- If the seeding process encounters any errors writing to the device, then you should remove the device by executing the command, 'seed -stop,' followed by 'seed -remove_device'. The device can be re-attached, or a new device can be attached. To start seeding after adding a device, enter the command, 'seed -start'. Seeding at this point will continue from the point where it stopped earlier. If seeding is stopped for any reason, enter the 'seed -stop' command, which will stop all of the seeding I/O activity. To continue again, enter the command, 'seed -start'.
- You need to export the attached device through the CIFS protocol. It can be a Windows share or a share exported from a Linux machine using the Samba protocol.
- During seeding, replication can be enabled as needed on the same containers to the same DR Series system or to different DR Series systems.
- Seeding does not delete the data on the device. Data on the device can also co-exist with the seed data. It is optional to delete the data on the device to free up the space for accommodating seed data.



- You are not required to seed the entire data. You can choose the amount of data that can be seeded, depending on factors like time, amount of external space available, and so on; and you can stop seeding accordingly. The residual data will reach the target during replication re-sync.

2.4 Export CLI flow

The following diagram demonstrates the flow of the data export using the DR Series system CLI commands.



3 Setting up a seeding import job on the target DR Series system

The seed import process copies the de-duplicated data from the external device provided to the target DR Series system. The following steps describe the CLI commands you need to enter for the import job on the target DR Series system.

1. Create a seed import job using the following command.

```
seed --create --op import
```

This command requests a password, which is the same password defined at the time of data export. The password is used to verify and decrypt the data.

```
[root@swwsys-92 ~]# seed --create --op import
Enter password for seed import:
Re-enter password for seed import:
Successfully created seed job details.
```

2. You can reference the device from which the seed data is to be read by using the following command. (Note that only the shares exported by the CIFS protocol are recognized.)

```
seed --add_device --server <server name> --volume <volume> --username <user name> [--domain <domain name>]
```

In this command, the parameters are as follows:

- **server name** - the name of the client that exports the device as a CIFS share.
- **volume name** - the name of the export share on the target server. The name is case sensitive.
- **user name** - the credentials needed to access the share. The password is requested separately.

```
[root@swwsys-92 ~]# seed --add_device --server 10.250.242.213 --volume Win_share --username administrator
Enter password for administrator@10.250.242.213:
Successfully added seed device.
```

3. Once the device is added successfully, you can cross check the configuration details by using the following command. This step is recommended before you proceed further.

```
seed -show
```

```
[root@swwsys-92 ~]# seed --show
Device info
=====
Server                :10.250.242.213
Volume                :Win_share
Username              :administrator
Domain                :NA

Job info
=====
Operation              :Import
Status                 :Initialized
Encryption type        :aes256
```



4. To start the seeding process, enter the following command.

```
seed -start
```

The data copy begins and continues until all of the data from the device is completely read.

```
[root@swwsys-92 ~]# seed --start  
Successfully started seed job.
```

5. To monitor the seeding process, enter the following command.

```
seed --stats
```

The type of information in the output of the command, "seed -stats," looks similar to the following example.

```
[root@swwsys-92 ~]# seed --stats  
Seeding Target Stats:  
  
Seed state:           SEED_STARTED  
Seed status:         PENDING  
Seed device mount:   /mnt/.__seed_device  
Seed export host:    DR4000-DHYLBM1.ocarina.local  
Seed export device added at: 2014-08-18 00:21:16  
DS's read:           40  
Streams read:        17435  
ZL entries written:  0  
Dictionary updates:  0  
Dup streams:         17435  
Bytes deduped:       504068720  
Streams committed:  0  
DS's committed:     0  
Total orig bytes committed: 0  
Total comp bytes committed: 0  
Avg Throughput:      56378.668 KB/s  
Max Throughput:      100843.872 KB/s  
Estimated time to sync: 0 days 0 hours 4 minutes 21 seconds
```

If the seed status is 'FINISHED,' then the data has been completely read from the attached device attached. The device can be removed after issuing the command, 'seed -stop,' and a new device if present can be attached.

6. If you need to stop seeding, or the device needs to be removed, you can enter the following command to stop all I/O from the seeding device.

```
seed -stop
```

```
[root@swwsys-92 ~]# seed --stop  
Successfully stopped seed job.
```



7. To remove the device from the DR Series system to which the seed data has been written, enter the following command. (It is recommended that you enter the command, `seed -stop`, before removing the device.)

```
seed -remove_device
```

```
[root@swwsys-92 ~]# seed --remove_device  
Successfully deleted device details.
```

8. If the data gathering from all the devices is complete, you can enter the following command to remove the seed job completely.

```
seed --delete
```

```
[root@swwsys-92 ~]# seed --delete  
Successfully deleted seed job details.
```

9. Once the import is complete, replication re-sync must be performed between the source and target DR Series system containers. Once replication reaches the 'INSYNC' state, execute the following command to remove any data that is left unaccounted from seeding.

```
Seed -cleanup
```

```
[root@swwsys-92 ~]# seed --cleanup  
Successfully added seed ZL logs to cleaner queue.
```

3.1 Important notes about the import seeding process

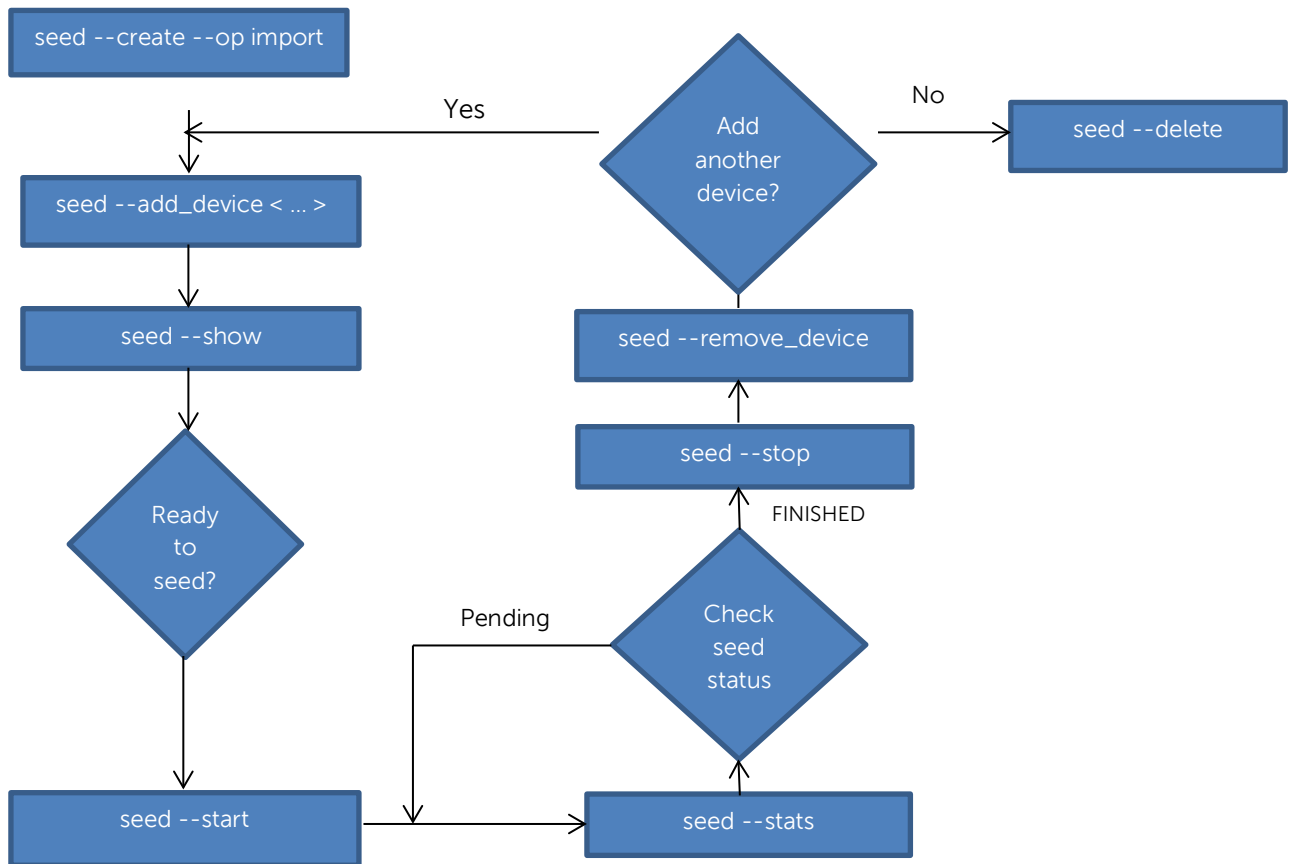
- The order in which the seed devices are attached makes no difference for the seeding process.
- The data at source could have changed after the export process is initiated. This data is replicated during replication re-sync.
- The command 'seed -cleanup' must be executed only after the replication is established between source and target. If it is executed before, the entire imported data set could be deleted.
- If seeding has to be stopped for any reason, you should enter the 'seed -stop,' which will stop all seeding I/O activity. To continue, enter the command, 'seed -start'. If an error occurs while reading the seeding device, you should remove the device using the command, 'seed -remove_device,' after stopping the I/O, and then re-attach the device.
- If any device is lost, corrupted, or left unattached during the import process, the data in that particular device will be received at the time of replication resync and will not have any effect on the import process.



- Once the data on the device is imported, the seed import process **will not** delete the data on the seed location. You could use the same data, or the device, to import the data on a different DR Series system if needed (for example, to setup cascaded replication). However, it is recommended that you remove the data after replication setup is complete.

3.2 Import CLI flow

The following diagram demonstrates the flow of the data import using the DR Series system CLI commands.



4 Synchronizing the source and target containers

Once seeding import is complete, two possible scenarios exist:

- The target container already exists, or,
- The target container does not exist, and, therefore, a fresh replication pair must be created.

4.1 If a target container exists

If a target container exists, you should initiate replication re-sync between the source and target DR Series system containers. Since the data is already present on the target, the re-sync will complete quickly after transferring the namespace with any other new or changed data. Complete the following steps.

1. Enter the command:

```
replication --resync --name <name> --role <source | target>
```

2. Wait for replication state to come to "INSYNC".

4.2 If the target container does not exist

If a target container does not exist, complete the following steps.

1. Create a container on the target DR Series system.
2. Enable replication between the source and target DR containers by using the following command:

```
replication --add < ... >
```

```
Replication Source Container      : seed_container
Replication Source System        : 10.250.242.157 (DR4000-DHYLBM1)
Replication Target Container     : seed_container
Replication Target System        : 10.250.240.157 (dr4000-4zkrbm1)
Peer Status                       : Online
Replication State                 : INSYNC
Schedule Status                  : In window
Replication Average Throughput    : 0 KiB/s
Replication Maximum Throughput    : 73401 KiB/s
Network Average Throughput        : 0 KiB/s
Network Maximum Throughput        : 42637 KiB/s
Network Bytes Sent                : 7.29 GiB
Pending Bytes                     : 0.00 B
Dedupe Network Savings           : 25.72%
Compression Network Savings       : 0.00%
Last INSYNC Time                 : 2014-08-12 09:16:50
Estimated Time to Sync           : 0 days 0 hours 0 minutes 0 seconds
```

3. Once the replication status changes to 'INSYNC,' then both source and target have the same data.
4. Enter the following command on the target to remove unwanted data created by seeding:

```
seed -cleanup
```

